

ZIMBABWE'S HISTORIC HOTELS

Issued 26th November 2015

(Extracted from Philatelic Bureau Bulletin No 4 of 2015)²

40c: Leopard Rock Hotel was built in Bvumba was opened in the 1946.³ The left end turret on the upper floor had a panoramic view of the surrounding countryside. Wild animals including leopards are said to have been frequently seen in the area. It also had a very good view of the kitchen garden of the hotel, where all the vegetables served for meals were grown.

The Queen Mother stayed in one of the rooms, which became known as the Royal Suite, in 1953.³

After independence, the Taberer family purchased in 1990s, and undertook major extensions to the hotel so that the dining room is now on the left-hand side of that turret. On the right-hand side more bedrooms and a gaming room have been built.³

The hotel is popular with the golfing fraternity as it has an elite golf course, from which you can see the mountains called the Himalayas, which form the boundary with Mozambique. On a clear day one can see the Indian Ocean over them.

The Leopard Rock hotel is now the premier resort of the Eastern Highlands. Several smaller hotels, inns and tearooms, as well as the famed Bvumba Gardens are located in this area.



Postcard – E T Brown

75c: The Bulawayo Club was first established in 1895, but was destroyed during the first Chimurenga. The present building was erected in 1901 after the peace Indaba in the Matobo Hills and was built.

There is no alteration to that original facade as illustrated on the stamp. The Bulawayo Club still operates as a "Club" in conjunction with any major city club such as Harare, Thwane etc.

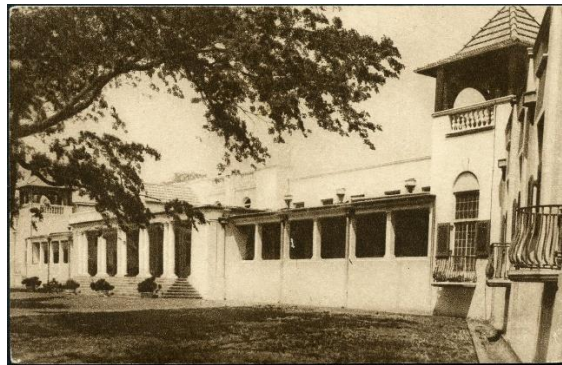


Postcard – Pictorial Publication Syndicate

It still contains the original layout and most of the original furniture. One of Thomas Baines' 8 paintings of "Mosi-oa-Tunya" is in the internal gallery. Electricity was installed in the 1930's. It is, therefore, one of the oldest accommodation establishments in the country of Zimbabwe.

85c: Victoria Falls Hotel, like Meikles hotel in Harare was opened in 1915 to accommodate tradesmen and tourists.

The Victoria Falls Hotel was extended in the 1920's. High tea is still served on the veranda near the original Msasa tree which has grown quite big. The terrace still gives a perfect view of the railway bridge and spray of the main Victoria Falls.



Postcard – Percy Clarke

The Royal Family of King George VI, Queen Elizabeth and their two daughters who had travelled by special steam train from Cape Town, stayed there in 1947. The original train is now stationed adjacent to Kadoma Ranch Motel.

The main Hall displays pictures painted in oils of the King's mother and father King George V and Mary. The rooms in which they stayed are now called the Presidential Suite.

It is an ideal location for tourists and international business people alike. The railway station is directly opposite the front entrance which is manned by a colourfully dressed footman who has accumulated badges from all over the world. The original accommodation is largely taken up by the reception area and the administrative offices.

\$1: Meikles Hotel opened 100 years ago being the main hotel at which international tourists and business people initially stay. It was extensively refurbished in the 1970's so that the main dining area is now on the first floor above the Mirabelle which was the original dining area. It has under gone further rehabilitation for its centenary.



Postcard: Artco

It is now one of the finest 5-star hotels in the world with every modern facility available 24 hours a day. The main entrance is now in Third Street. High teas for which it was famous during the First World War have now again been reintroduced. It now has a complete bar on the ground floor. A special dining room called the Bagatelle and the original Livingstone room are still on the first floor on the corner of Third Street and Jason Moyo Avenue. The main dining area called La Fontaine is accessed through a cocktail bar and on the left of that is a buffet and roof garden which overlooks Africa Unity Square, where the flower sellers congregate, doing brisk business, especially in February when St Valentine's Day approaches.

There is special carpark with charges refundable for patrons of the hotel. There is a direct taxi service from the International Airport in Harare. Visitors are warned about using unconventional transport.

The lion sculptures that used to be in the main facade on the first floor adjacent to the Prince's Hall, which at one time used to be the house where parliament met, are now at the main entrance to the hotel. People used to joke that the lions roared every time a virgin passed by.

The Stamps



Catalogue Listings

SG	ZSC ¹	Value	Description
1411	809	40c	Leopard Rock Hotel
1412	810	75c	The Bulawayo Club
1413	811	85c	Victoria Falls Hotel
1414	812	\$1	Meikles Hotel

Technical details

Stamp size:	Sheet stamps:	35 x 30 mm
Sheet Size:	50 stamps (10 rows of 5 stamps), two panes per printed sheet	
Artist:	Cindy Stamps	
Paper:	ZSC paper type J: paper described by Zimpost as “Chancellor Litho PVA Gummed Postage Stamp Paper”. This paper is produced by Tullis Russell Coaters of Glenrothes, Fife, Scotland. Under UV there is no fluorescence either front or back, the stamp appears to be very dark	
Print colours:	Cyan, magenta, yellow & black	
Perforations:	SG 14½ x 14; ZSC 14¼ x 14 Top margin: Perforated through Other margins: Imperforate	
Printer:	NatPrint, Harare, Zimbabwe	
Printer’s Imprint:	Bottom margin, below Row 10 Column 3. Imprint printed in black	
Cylinder numbers:	Top margin above R1/1. Colours from left – cyan, magenta, yellow, black	
Colour register:	Type TL 4– round boxed – left margin opposite R1/1. Colours reading down – cyan, magenta, yellow, black	

Sheet Value: Top margin, above R1/5, printed in black

Sheet Number: Type SN 7 with printed 'ZIMPOST' prefix, right margin opposite R1/5 reading down

Bar codes: Opposite R9 & 10/5, printed in black, numbers:
 40c 2 009113 000387
 75c 2 009113 000394
 85c 2 009113 000400
 \$1 2 009113 000417

Print numbers:

40c	200,000	75c	10,000
85c	10,000	\$1	10,000

Issue date: 26th November 2015

Listed varieties

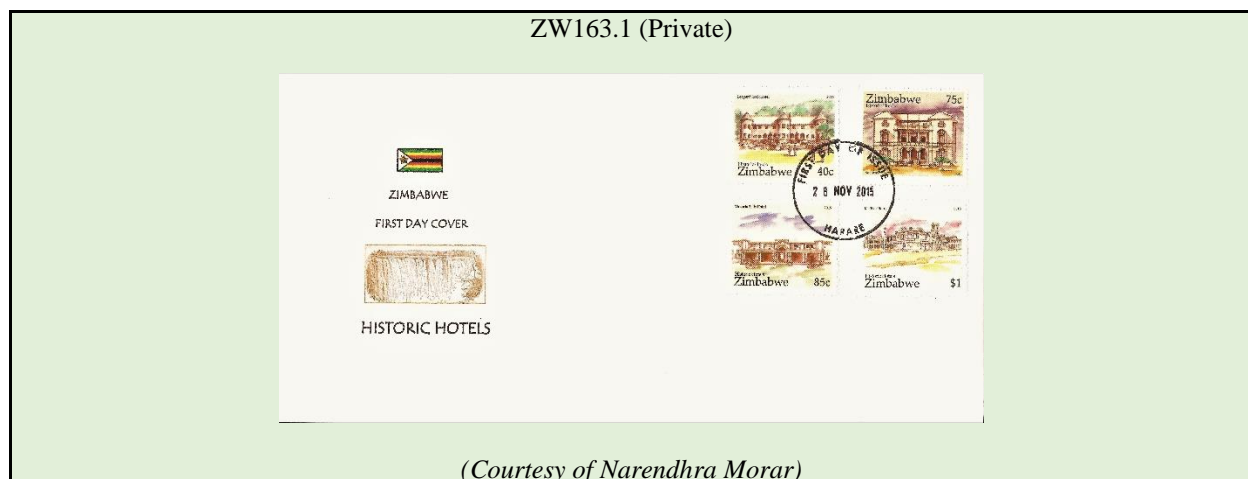
No listed varieties have been reported.

Unlisted Varieties

There are numerous small dots and specks in the printing of these stamps, particularly in the backgrounds which are more noticeable with the solid colours. No significant varieties reported.

First Day Cover

No first day covers were made available by the Philatelic Bureau, covers can, however be found with the Harare First Day of Issue canceller on plain covers and Bureau manila stationery. However, there is one privately produced cover.



Bibliography:

1. “The Zimbabwean Concise Postage Stamp Catalogue”, published by Harare Stamp Company, edited by Ken Allanson, Mike Amos and Geoff Brakspear. The catalogue continues to be updated and expanded by Geoff Brakspear, and is now published on the Rhodesian Study Circle website.
2. Zimbabwe Post, Philatelic Bureau Bulletin No 4 of 2015
3. History of Leopard Rock Hotel - <http://www.leopardrockhotel.com/about/history>