

# TOURIST ACTIVITIES IN ZIMBABWE

Issued 10<sup>th</sup> August, 1999

*(Extracted from Philatelic Bureau Bulletin No 4 of 1999)<sup>2</sup>*

Tourism has been the fastest growing sector of Zimbabwe's economy in recent years. Within this relatively small country there is a diverse range of landscapes and activities. Shared with Zambia, the Victoria Falls are one of the seven natural wonders of the world, and one of Africa's most popular attractions.



## **\$2.00: Canoeing**

A popular activity is a canoeing safari on the Zambezi. These vary in length from one day to a 21 day trip from Kariba, through some of the most remote and beautiful wilderness areas, to the Mozambique border. This is an ideal way to review game (particularly elephants and hippos!) and to enjoy the abundant birdlife.



## **\$6.70: Rock climbing**

For the energetic there are plenty of opportunities for rock climbing and abseiling. The terrain for such activities varies from granite domes and kopje sites in the Matopo Hills to the rugged mountains of the Eastern Highlands or the sandstone cliffs in the lowveld of south-eastern Zimbabwe.

## **\$7.70: Microlighting**

The Victoria Falls is a breath-taking spectacle viewed either from the ground or the air, but undoubtedly, seeing them from the air is an unforgettable experience. There are a number of options available for airborne sight-seeing, namely flights by helicopter or fixed-wing planes and microlighting.





### **\$9.10: White Water Rafting**

One of the most exhilarating activities on offer at the Victoria Falls is white water rafting. Trips last from half a day to one and a half days and go through Grade 5 rapids - just one grade below the impossible!

### **\$12.00: Scenic Views**

Zimbabwe offers a diverse range of scenery from the wide open savannah grasslands in the south to the magnificent Eastern Highlands where a series of dramatic mountain ranges run for 300km along Zimbabwe's eastern border with Mozambique. Mount Nyangani in the Nyanga district, at 8500 feet (2592 metres) is the highest point in the country.



World's View, Nyanga



### **\$16.00: Game Viewing**

One of the major tourist attractions in Zimbabwe is the abundance of wildlife. There are several safari areas, National Parks and private conservancies which offer a wide range of facilities and activities. Hwange National Park is one of the best wildlife areas, home to large herds of free-roaming elephants as well as a few remaining herds of both black and white rhinos.

## The Stamps



## Catalogue listings

SG	ZSC <sup>1</sup>	Value	Description
992	420	\$2.00	Canoeing
993	421	\$6.70	Rock Climbing
994	422	\$7.70	Microlighting
995	423	\$9.10	White Water Rafting
996	424	\$12.00	Scenic View
997	425	\$16.00	Game Viewing (spelt 'Veiving')
	a.		Broken first '0' of \$16.00 (Cyl 1B, Row 6/1)

## Technical details

<b>Stamp size:</b>	All values	35 x 30 mm
<b>Sheet Size:</b>	50 stamps (10 rows of 5 stamps), two panes per printed sheet	
<b>Artist:</b>	Janet Duff	
<b>Paper:</b>	ZSC paper type F - Although still officially described as HS8, the paper properties changed in 1996. This is fluorescent front but non-fluorescent back and the gum is whitish PVA.	
<b>Print colours:</b>	Cyan, magenta, yellow & black	
<b>Perforations:</b>	SG 14½ x 14, ZSC 14¼ x 14	
	Top margin:	Perforated through.
	Other margins:	Imperforate

**Printer:** NatPrint, Harare, Zimbabwe

**Printer's Imprint:** Bottom Margin, below Row 10 Column 3. Imprint printed in black

**Cylinder numbers:** Top margin above R1/1. Colours from left – cyan, magenta, yellow, black

**Colour register:** Type TL 4– round boxed – left margin opposite R1/1. Colours reading down – cyan, magenta, yellow, black

**Sheet Value:** Top margin, above R1/5, printed in black.

**Sheet Number:** Type SN 4a with 'PTC' prefix, right margin opposite R1/5, reading down

**Print numbers:**

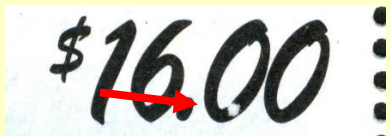
\$2.00	2,500,000	\$6.70	190,000
\$7.70	190,000	\$9.10	190,000
\$12.00	190,000	\$16.00	190,000

**Issue date:** 10<sup>th</sup> August, 1999

**Withdrawal from sale:**

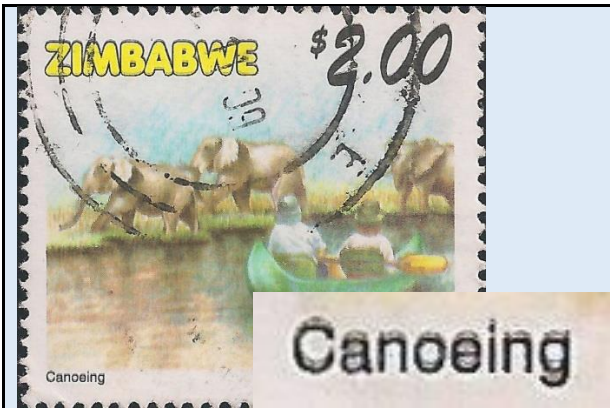
**Demonetarisaton:**

**Listed varieties**

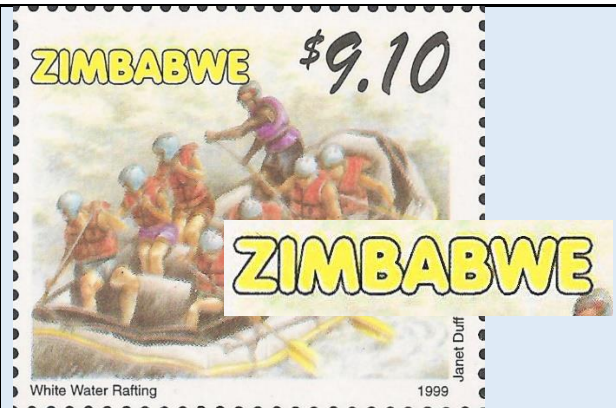
<p><b>RSC 425a</b> Broken First '0' of \$16.00</p>	
--	--

## Unlisted Varieties

There are numerous small dots and specks in the printing of these stamps, particularly in the backgrounds.



**\$2.00:** Doubling of black giving fuzzy appearance to whole image.  
(Courtesy Narendhra Morar)



**\$9.10:** Shift or yellow plate up, giving "yellow" shadow to "Zimbabwe"  
(Courtesy Narendhra Morar)



All values, save \$7.70, imperforate proof blocks from right margin

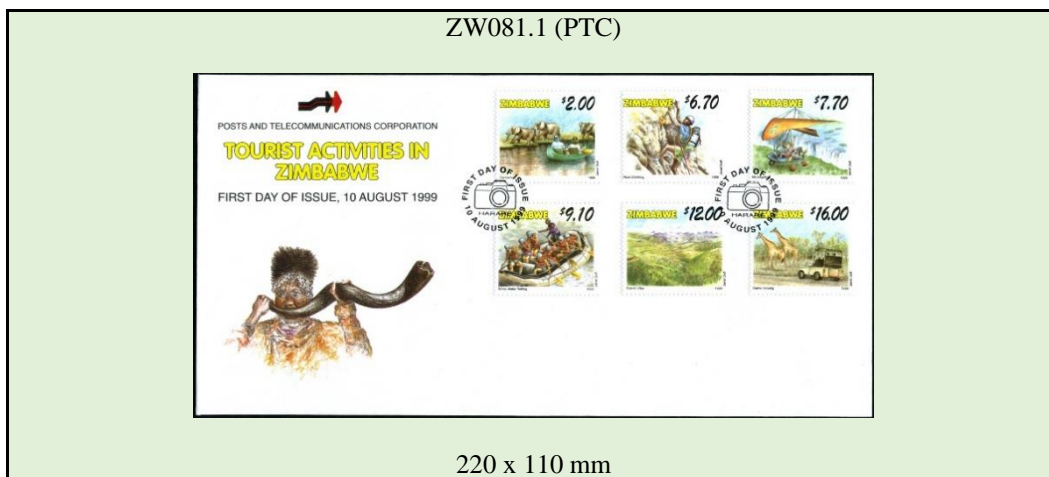
(Source eBay January 2022)



## First Day Cover

The cover numbering comes from the catalogue produced by Geoff Brakspear.

A pictorial first day of issue canceller was produced for this issued and was used by the Philatelic Bureau. Other first day cover cancellers continued to be used at main post offices.



## Related Material

### Natprint Proof Presentation Cards

Presentation cards produced by Natprint with imperforate proofs of the stamps to be issued. The presentation cards were forwarded to the PTC for approval of the “final” product. These proofs show stamp values prior to the increase in postal rates on 16<sup>th</sup> July 1999.

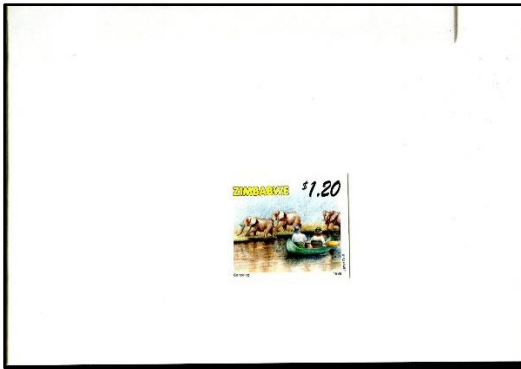
*(Courtesy of Jefferson Ritson)*



Front cover



Inside front cover



\$1.20 stamp (issued as \$2.00)



\$4.10 stamp (issued as \$6.70)



\$4.70 stamp (issued as \$7.70)



\$5.60 stamp (issued as \$9.10)



\$7.40 stamp (issued as \$12.00)



\$9.90 stamp (issued as \$16.00)

**Bibliography:**

1. "The Zimbabwean Concise Postage Stamp Catalogue", published by Harare Stamp Company, edited by Ken Allanson, Mike Amos and Geoff Brakspear. The catalogue continues to be updated and expanded by Geoff Brakspear
2. PTC Philatelic Bureau Bulletin No 4 of 1999.

<b>Additions/Changes since December 2020</b>	
3-2022	5 values – imperforate proofs